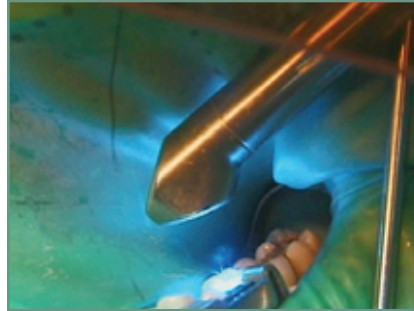


RESTORATIONS SERIES

Resin Fillings



The procedure



Hardened by a special light



A natural look

Resin fillings are a great way to restore your back teeth. Because they bond directly to teeth, they provide the added strength that damaged teeth need to withstand frequent biting pressure. Also, we can match the color of the resin to your teeth to preserve your beautiful, natural-looking smile.

The procedure

We want the entire procedure to be comfortable for you, so the first thing we do is make sure that the tooth and surrounding area are thoroughly numb. Depending on the size of the filling and which tooth we're working on, we may also use a rubber dam. A rubber dam is a small, flexible rubber sheet that isolates the teeth we're working on and prevents anything from falling to the back of your throat.

We use the handpiece to remove the decay and shape the tooth. Then we apply a gel that chemically roughens the tooth surface to ensure a stronger bond with the resin filling. To mold the filling to the shape of the tooth, we first surround the tooth with a thin, flexible band. A small wooden wedge between the teeth holds the band snugly in place. Once we've placed the resin in the tooth, we use a harmless, high-intensity light to harden the filling.

After the filling has set, we smooth and polish it. We check the bite with colored tape that shows us where your teeth are touching. Finally, we make sure that you'll be able to floss around the filling to keep your teeth plaque-free and healthy.