

---

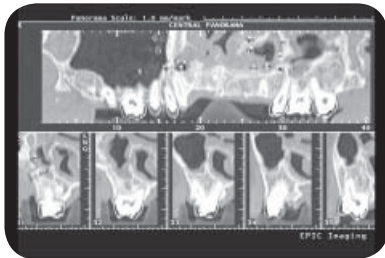
# Considering Dentures for a Partial Arch

---

## Partial arch

When several teeth are missing, we may recommend a partial denture for replacing them.

A partial can solve a number of problems caused by missing teeth.



*Panographic x-ray*



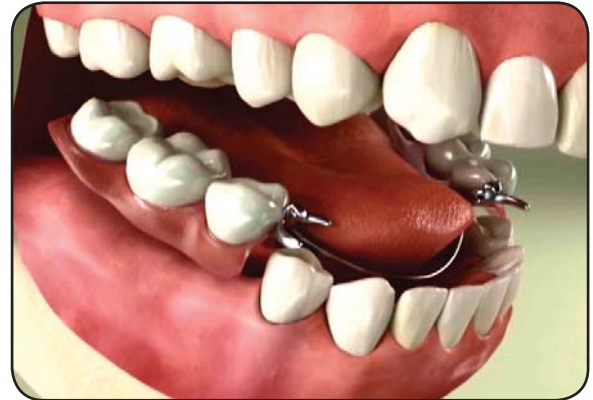
*Shifting teeth*

## Diagnosis and treatment

To determine if partial dentures are right for you, we perform a thorough exam of your teeth and gums. The exam typically includes x-rays to check the health of your jawbone.

We also take impressions to create an accurate model of your mouth. In addition, we work with you to select the best color and shape for your new teeth.

There are several types of partials, so we will talk with you about the best type for your situation.



*Partial arch denture*

## Problems caused by missing teeth

Missing teeth change the biting forces on teeth around the space. Neighboring teeth start to shift, and the opposing teeth begin to extrude out of their sockets.

These changes create places around the teeth that are hard to keep clean; so plaque and bacteria quickly accumulate. This accumulation can cause tooth decay and periodontal disease.

Changes in the bite can also put improper chewing forces on the shifted teeth, and this may lead to grinding, clenching and painful problems with your jaw joint, the TMJ. In addition, an uneven bite can make it hard to chew and enjoy food.

## Benefits of a partial

Partial dentures replace missing teeth, and this provides many benefits, including easier eating and clearer speech. The partials are removable for easier cleaning, and they are a good way to maintain a stable bite and restore a natural-looking smile.